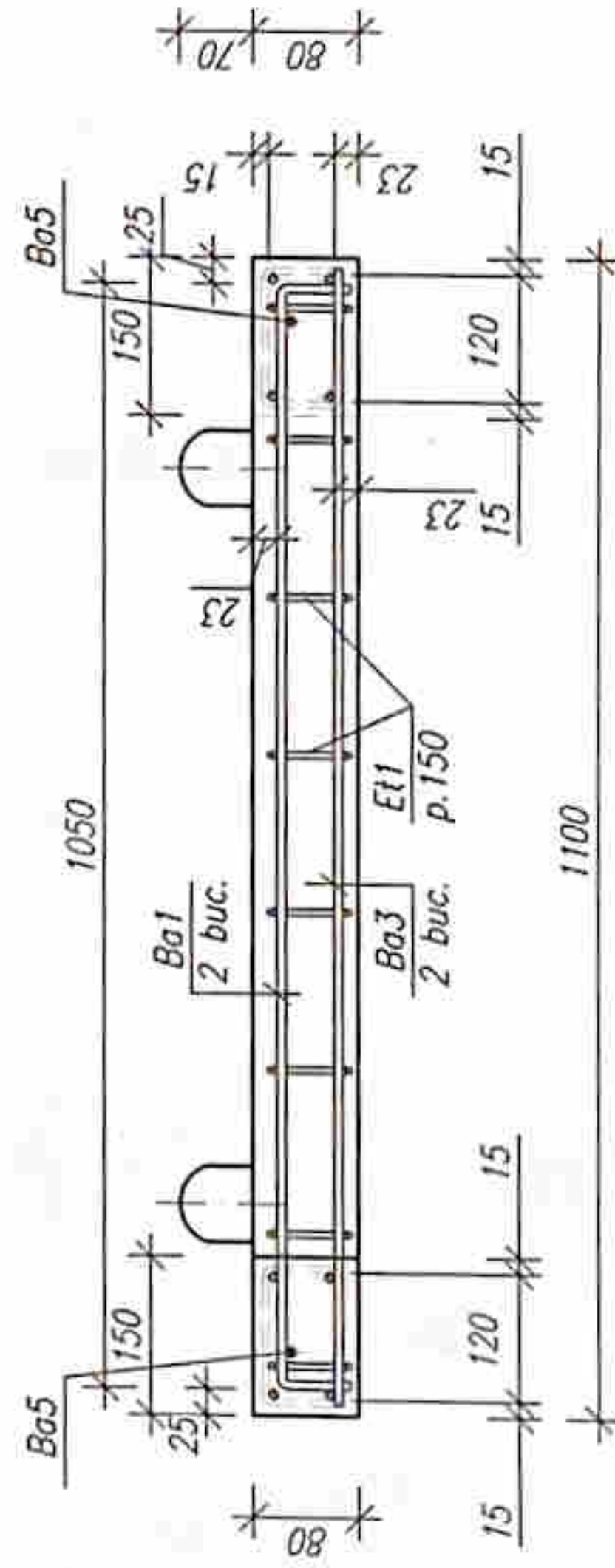
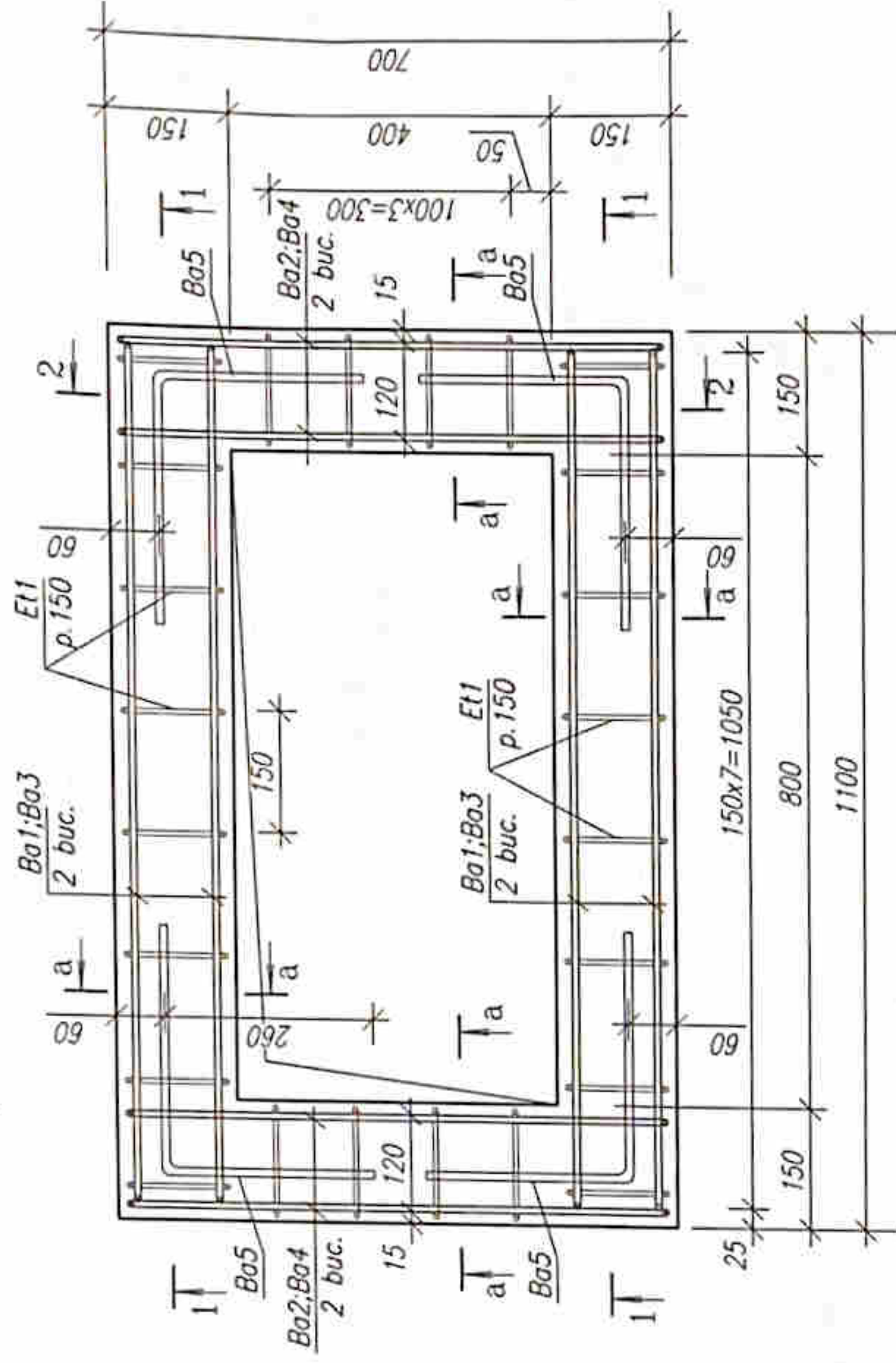
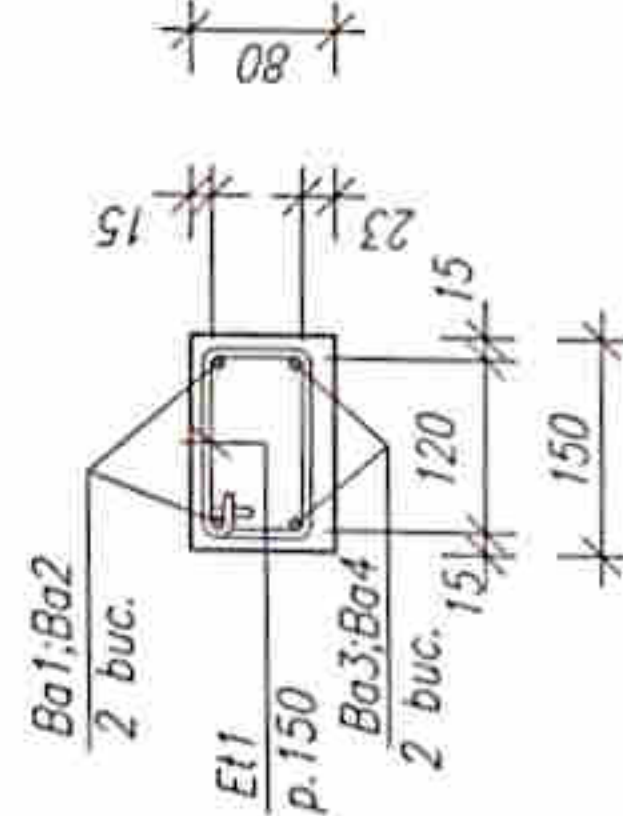


Sectionne 1-1
sc. 1:10
(desen de armare)



Sectione a-a(sc.1:10)
(desen de armare)



Specificatie elemente de armare a placii monolite PP1

format	zona	poz.	Indicare	Denumire	Cont.	Masa un.kg.	Note
				<u>Elemente de asamblare PP1</u>		92kg	
	Ba1		vezi borderou piese,pl.6	ø8A400, SM SR EN 10080:2014, L=1150	4	0.46	
	Ba2			" L=1070	4	0.43	
	Ba3		vezi borderou piese,pl.6	" L=750	4	0.3	
	Ba4			" L=670	4	0.27	
	Ba5		vezi borderou piese,pl.6	" L=580	4	0.23	
	U1		pl.6	URECHE DE ARMATURA U1	4	0.42	
	Et1		vezi borderou piese, pl.6	" L=480	24	0.11	
			<u>Materiale:</u>	Beton C30/37, m3	0.037		x1.02

						CBA
						Elaborarea desenelor de executie a elementelor prefabricate din beton armat pentru canalizarea pluvială
ISP			Rotari M.	faza	plansa	planse
Elaborat			Rotari M.	PE	5	
				Placa monolita PPI(desen de cofraj si desen de armare)		
				Specificatie materiale.		
				IMP „CHIȘINAŢU PROIECT”		

